

TECHNICAL MANUAL

OPERATOR'S, ORGANIZATIONAL, DIRECT SUPPORT
LUIID GENERAL SUPPORT MAINTENANCE
MANUAL INCLUDING REPAIR PARTS LIST

FOR

TANK, PRESSURE, AIR,
PORTABLE (STEWART-THOMAS
INDUSTRIES, INC)
(NSN 4940-00-508-6354)
MODEL K325

HEADQUARTERS, DEPARTMENT OF THE ARMY
JANUARY 1980

TECHNICAL MANUAL

No. 9-4940-455-14&P

HEADQUARTERS
DEPARTMENT OF THE ARMY
WASHINGTON, DC, 31 January 1980

OPERATOR'S, ORGANIZATIONAL, DIRECT SUPPORT AND
GENERAL SUPPORT MAINTENANCE MANUAL
INCLUDING REPAIR PARTS LIST
FOR
TANK, PRESSURE, AIR, PORTABLE
(STEWART-THOMAS INDUSTRIES, INC.), MODEL K325
(NSN 4940-00-508-6354)

REPORTING OF ERRORS

You can improve this manual by recommending improvements using DA Form 2028 (Recommended Changes to Publications and Blank Forms) and mail the form to Commander, US Army Armament Material Readiness Command, ATTN: DRSAR-MAS, Rock Island, IL 61299. A reply will be furnished direct to you.

This manual is published for the purpose of identifying an authorized commercial manual for the use of the personnel to whom the pressure tank is issued.

Manufactured by Stewart-Thomas Industries, Inc.
95A Bell Street
W. Babylon, NY

Procured under Contract No. DAAA09-76-C-6135.

This technical manual is an authentication of the manufacturers' commercial literature and does not conform with the format and content specified in AR 310-3, Military Publications. This manual does, however, contain available information that is essential to the operation and maintenance of the equipment.

DESCRIPTION: Portable Air Supply Tank, having a minimum volumetric capacity of 8.5 gallons with an air capacity of 150 PSIG. Weight of unit with full tank of air is approximately 35 pounds and can easily be hand carried. Tank is complete with pressure gauge, relief valve, refill valve, on-off valve and six(6)foot rubber hose assembly with ball type air chuck, which will fit all standard tire filler valves.

OPERATION: Fill tank with air from any source having an air supply 150 PSIG minimum capacity and filler hose with an air chuck (tire valve type). When filling the tank be sure to check the pressure gauge to avoid over-pressurization.

IMPORTANT ! Be sure the On-Off valve is in the Off position when filling.

To use the tank, open the on-off valve and insert the Ball Air Chuck over tire inflation valve. Inflate to pressure desired. After each use check pressure gauge on tank to determine remaining pressure in tank. If low promptly refill tank prior to next use. Pressure in tank must always be greater than desired inflation pressure.

CAUTION When using the tank DO NOT STRETCH THE HOSE TO REACH ITEM TO BE INFLATED: MOVE THE TANK CLOSE TO ITEM BEING INFLATED LEAVING SLACK IN HOSE.

When inflation has been accomplished press the shut off valve .
DO NOT OVERPRESSURIZE TANK OR TAMPER WITH RELIEF VALVE.

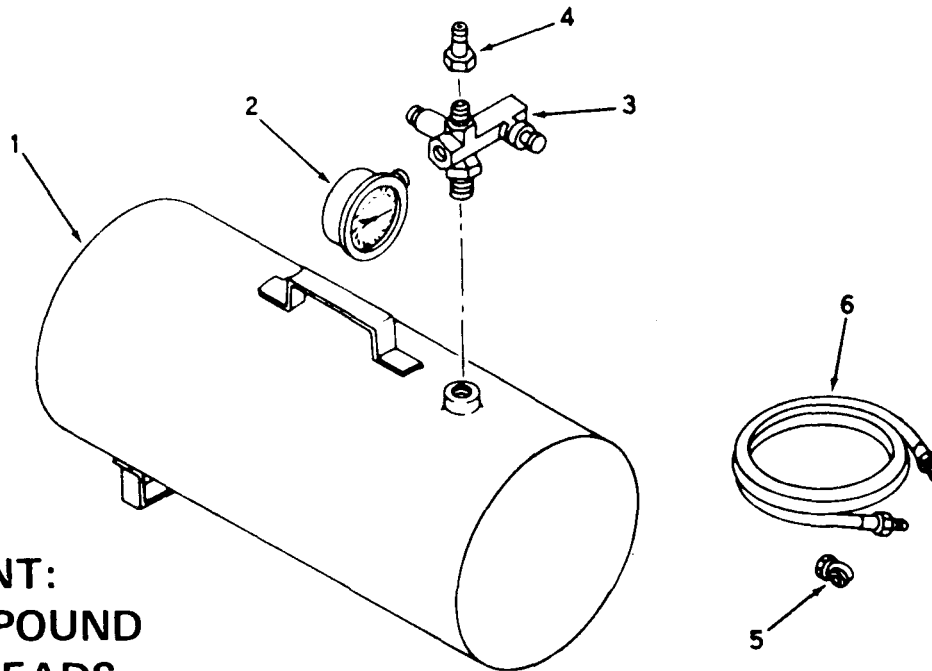
TROUBLE SHOOTING:

1. No air flow: Check on-off valve making sure valve is in the on position. Check gauge on tank, if remaining pressure in tank is equal to or less than the pressure desired refill the tank.
2. Pressure gauge reads beyond 150 PSIG when refilling:
STOP FILLING TANK IMMEDIATELY ! GAUGE AND/OR RELIEF VALVE MAY BE DEFECTIVE Bleed down all air pressure from the tank by removing the hose from the manifold to which it is attached to the tank and open the on-off valve. After tank has been fully emptied of all pressure replace gauge and relief valve and reattach the hose to the manifold. All threads should be cleaned well and theading compound should be applied to all male threaded ends.
3. Tank pressure gauge does not register when refilling:

Filler valve may be defective.
Pressure gauge could be defective.

TANK, PRESSURE, AIR, PORTABLE

MODEL NUMBER: K325



**IMPORTANT:
USE PIPE COMPOUND
ON ALL THREADS**

PARTS LIST:

<u>FIGURE NO.</u>	<u>NOMENCLATURE</u>	<u>PART NO.</u>	<u>QUANTITY</u>
1	TANK ASSEMBLY	2056	1
2	AIR GAUGE	2057	1
3	RELIEF ASSEMBLY	2058	1
4	FILLER VALVE	2059	1
5	AIR CHUCK	2060	1
6	AIR HOSE	2061	1

By Order of the Secretary of the Army:

Official :

J. C. PENNINGTON
Major General, United States Army
The Adjutant General

E. C. MEYER
General, United States Army
Chief of Staff

